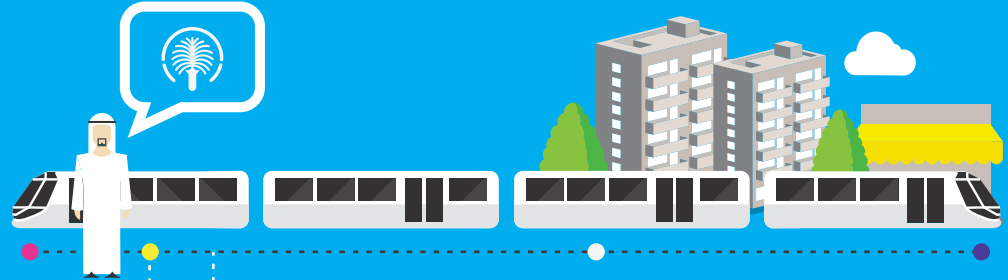


DID YOU KNOW THAT  
**DUBAI TRAM**

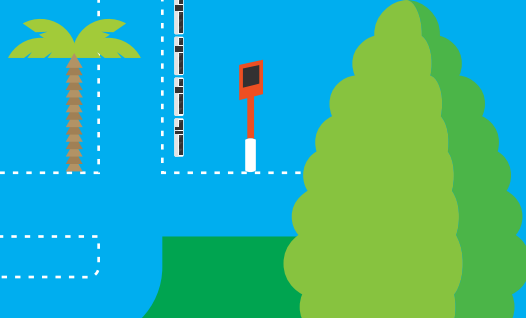
WILL COVER A

TOTAL DISTANCE OF

10.6  
KM?



STARTING FROM  
**DUBAI MARINA** PASSING THROUGH **JBR,**  
**KNOWLEDGE VILLAGE, DUBAI MEDIA**  
**CITY, DUBAI INTERNET CITY** ENDING AT  
**AL SUFOUH**



ترام دبي  
**Dubai tram**



**Closer.  
Faster.**

TOGETHER WE BUILD THE FUTURE OF DUBAI

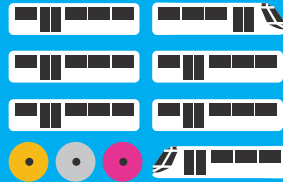
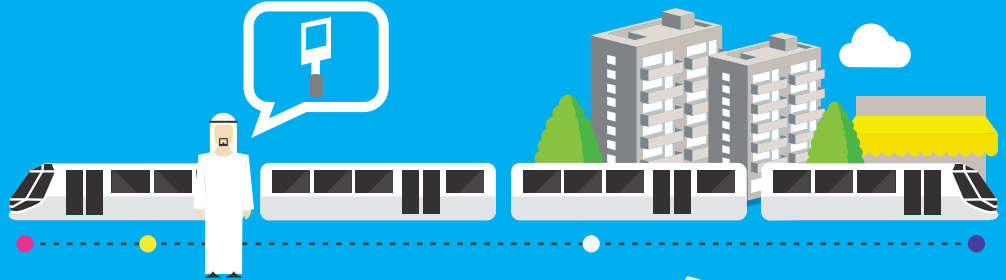
Facebook: [www.facebook.com/rtadubai](http://www.facebook.com/rtadubai) Call Center 800 90 90  
Youtube: [www.youtube.com/rtadubaigov](http://www.youtube.com/rtadubaigov) ask@rt.ae [www.rta.ae](http://www.rta.ae)

DID YOU KNOW THAT  
**DUBAI  
TRAM**

WILL HAVE

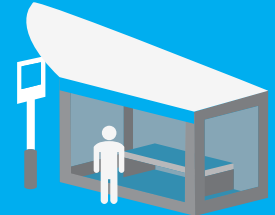
**7**

CARRIAGES



WOMEN  
+  
CHILDREN

GOLD



SILVER

WITH 3 CLASSES

ترام دبي  
Dubai tram



Closer.  
Faster.

TOGETHER WE BUILD THE FUTURE OF DUBAI

Facebook: [www.facebook.com/rtadubai](https://www.facebook.com/rtadubai)  
Youtube: [www.youtube.com/rtadubaigov](https://www.youtube.com/rtadubaigov)

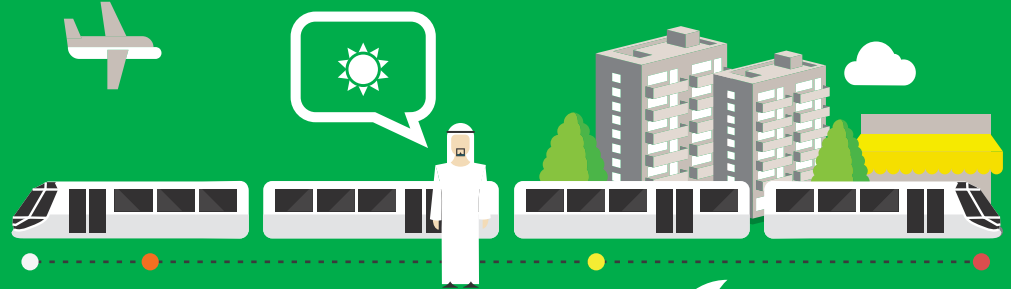
Call Center 800 90 90  
ask@rta.ae www.rta.ae

DID YOU KNOW THAT  
**DUBAI  
TRAM**

WILL ARRIVE EVERY



MINUTES?



FROM  
5.30 AM



TO  
12 MIDNIGHT

ترام دبي  
Dubaitram



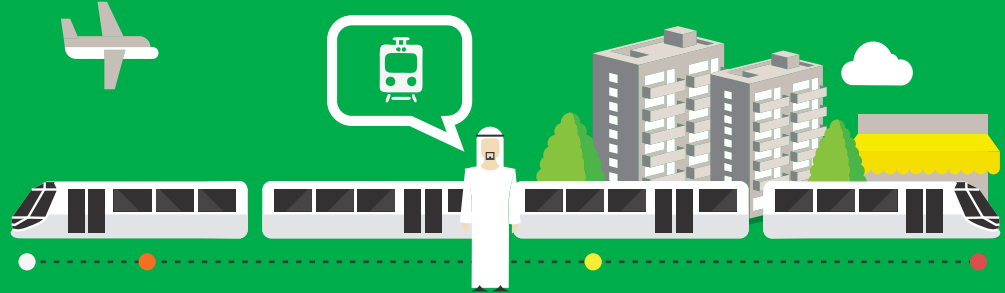
Closer.  
Faster.

TOGETHER WE BUILD THE FUTURE OF DUBAI

Facebook: [www.facebook.com/rtadubai](https://www.facebook.com/rtadubai) Call Center 800 90 90  
Youtube: [www.youtube.com/rtadubaigov](https://www.youtube.com/rtadubaigov) ask@rta.ae www.rta.ae

DID YOU KNOW THAT  
**DUBAI TRAM**

WILL CONNECT WITH



DUBAI METRO AT

**2**

STATIONS -  
DUBAI MARINA  
& JLT

& PALM JUMEIRAH  
MONORAIL  
ON AL SUFOUH STREET?



ترام دبي  
Dubai tram



Closer.  
Faster.

TOGETHER WE BUILD THE FUTURE OF DUBAI

Facebook: [www.facebook.com/rtadubai](https://www.facebook.com/rtadubai)

Youtube: [www.youtube.com/rtadubaigov](https://www.youtube.com/rtadubaigov)

Call Center 800 90 90

ask@rta.ae [www.rta.ae](http://www.rta.ae)

DID YOU KNOW THAT  
**DUBAI  
TRAM**



WILL ALWAYS HAVE

**YOU MUST ALWAYS GIVE WAY TO TRAMS.**

**PRIORITY  
ON THE  
ROAD?**



ROADS MUST BE CROSSED  
USING DEDICATED  
PEDESTRIAN CROSSINGS

ترام دبي  
Dubai tram



**Closer.  
Faster.**

TOGETHER WE BUILD THE FUTURE OF DUBAI

Facebook: [www.facebook.com/rtadubai](https://www.facebook.com/rtadubai) Call Center 800 90 90  
Youtube: [www.youtube.com/rtadubaigov](https://www.youtube.com/rtadubaigov) [ask@rta.ae](mailto:ask@rta.ae) [www.rta.ae](http://www.rta.ae)



DID YOU KNOW THAT  
**DUBAI  
TRAM**



CARES ABOUT YOUR

**DON'T USE HEADPHONES & MOBILE PHONES  
NEAR TRAM TRACKS**

**SAFETY  
ON THE  
ROAD?**



**INSTRUCTIONS FROM  
TRAM OFFICIALS  
MUST BE FOLLOWED**

ترام دبي  
Dubai tram

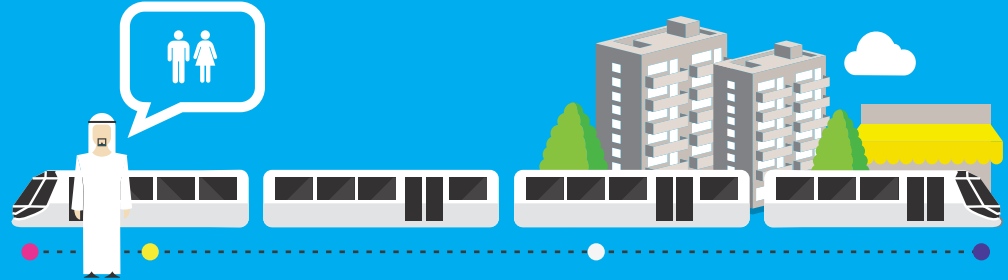


**Closer.  
Faster.**

TOGETHER WE BUILD THE FUTURE OF DUBAI

Facebook: [www.facebook.com/rtadubai](https://www.facebook.com/rtadubai) Call Center 800 90 90  
Youtube: [www.youtube.com/rtadubaigov](https://www.youtube.com/rtadubaigov) ask@rta.ae [www.rta.ae](http://www.rta.ae)

DID YOU KNOW THAT  
**DUBAI TRAM**

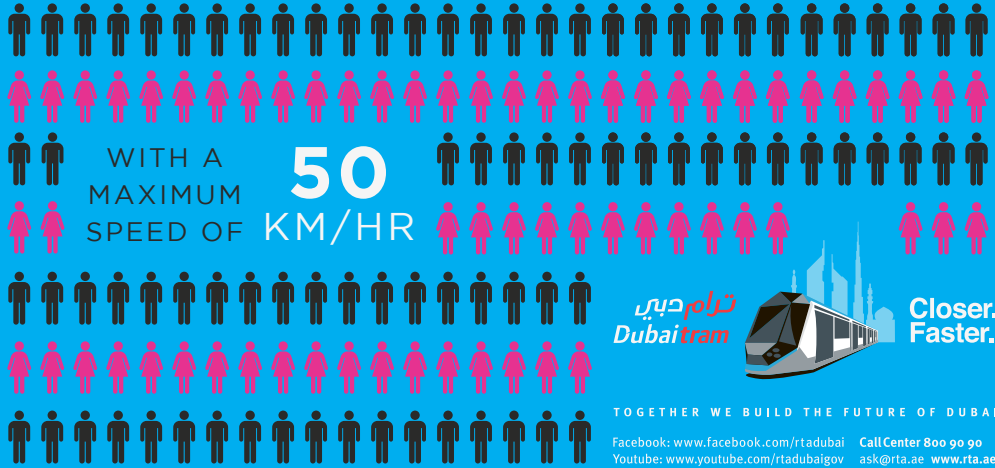


WILL CARRY A

MAXIMUM

**405**

PASSENGERS  
PER TRAM?



ترام دبي  
Dubai tram

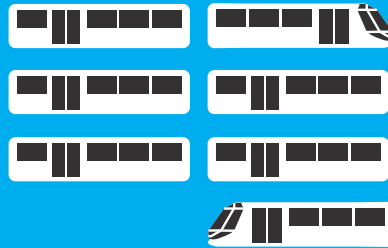
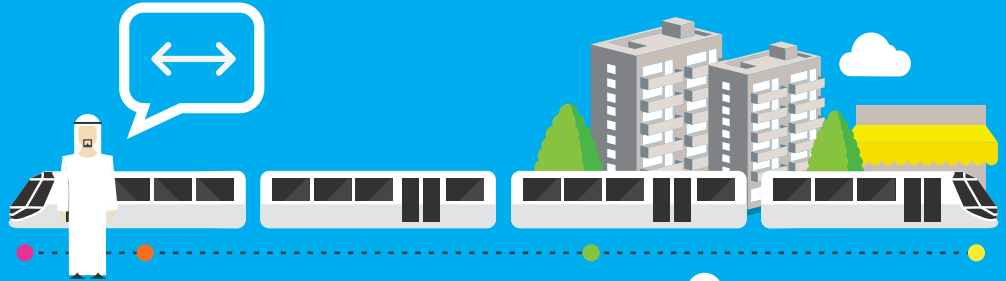


Closer.  
Faster.

DID YOU KNOW THAT  
**DUBAI TRAM**

WILL BE

**44**  
METERS  
IN LENGTH?



**3.5**  
METERS  
IN HEIGHT?



**44 METERS**

